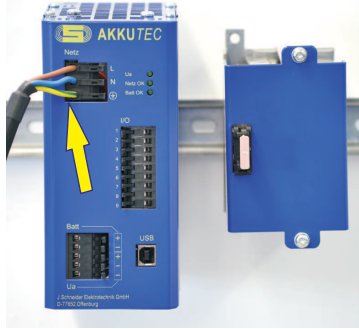


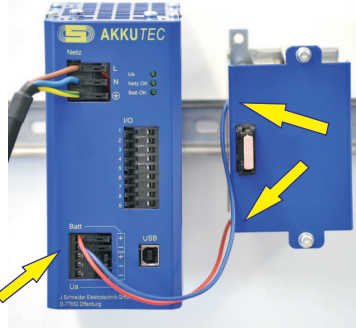
## Elektrischer Anschluss und Inbetriebnahme

1.



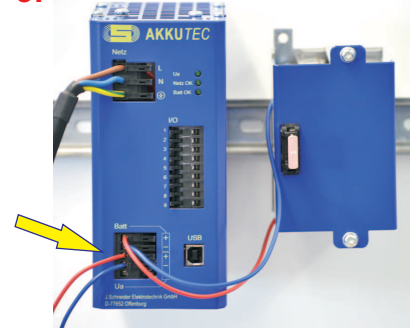
Anschluss des AKKUTEK an das Versorgungsnetz (230 V AC)

2.



Anschluss des Akkus an den Batterieanschluss des AKKUTEK

3.



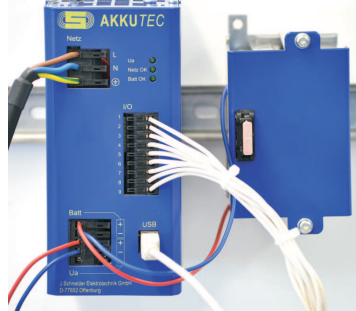
Anschluss der Last an den gepufferten 24 V DC Ausgang des AKKUTEK

4.



Verdrahtung der Ein-/Ausgänge (Temp. Sensor, Shutdown, Netz ok, Batt ok)

5.



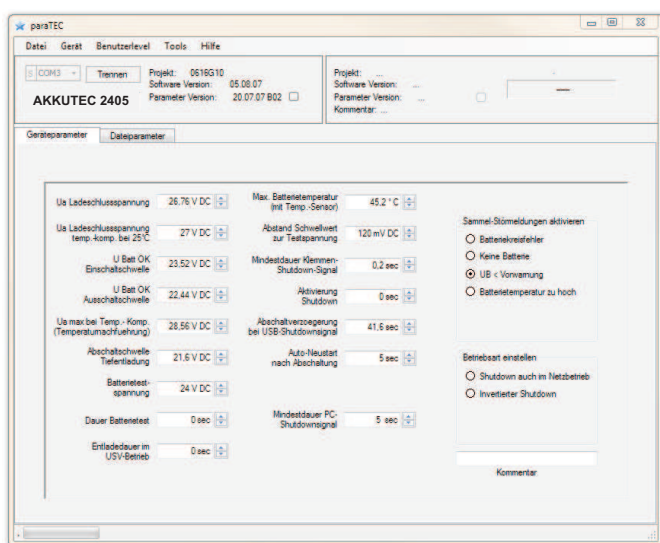
Anschluss der USB-Verbindung zum PC

6.



AKKUTEK vollständig geladen. Die LEDs „Ua“, „Netz OK“ und „Batt OK“ leuchtet.

## Parametrier-Software



Mit der paraTEC Software können Sie Geräteparameter wie Ausgangsspannung, zulässiger Spannungsbereich, Sammelstörmeldungen usw. einstellen.

Fordern Sie unsere Unterlagen an!

## Shutdown-Software

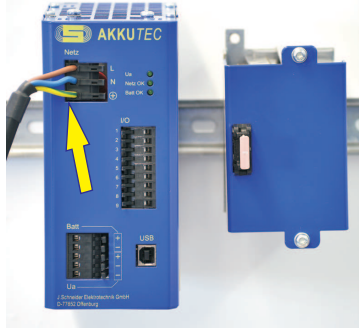


Die TECControl Software automatisiert den System-Shutdown bei Netzausfall und den kontrollierten System-Neustart bei Netzwiederkehr. Unkontrollierte Prozessstops werden vermieden.

Fordern Sie unsere Unterlagen an!

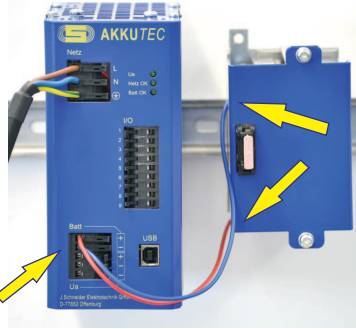
## Electrical Connection and Start-up

1.



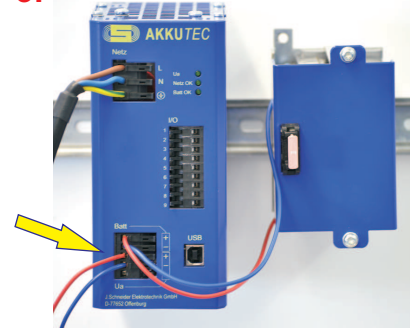
Connect the AKKUTEK to the mains (230 V AC)

2.



Connect the battery to the battery connector of the AKKUTEK

3.



Connect the load to the buffered 24 V DC output of the AKKUTEK

4.



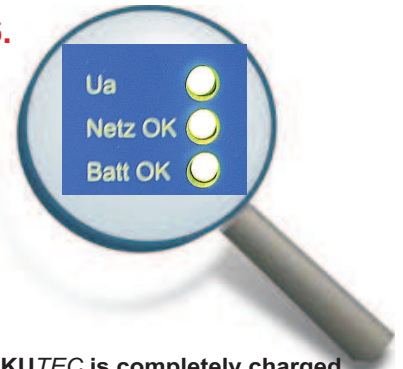
Wiring of the inputs/outputs (Temperature sensor, Shutdown, Mains ok, Batt ok)

5.



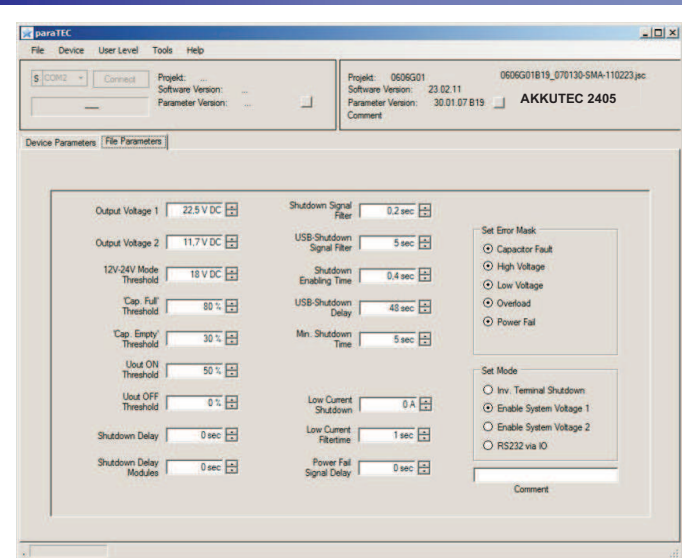
Connect the USB-cable to the PC

6.



AKKUTEK is completely charged. The LEDs „Ua“, „Netz OK“ and „Batt OK“ illuminate

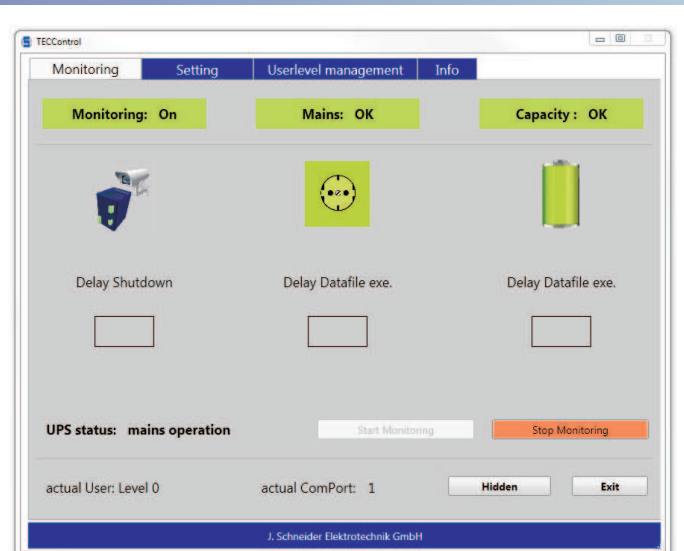
## Parameterizing-Software



Device parameters such as output voltage, permissible voltage range, general error a.s.o. can be adjusted with the paraTEC software.

Please ask for further information!

## Shutdown-Software



The TECControl-Software automates the system-shutdown at power failure and the controlled system-restart after power recovery.

Please ask for further information!

ATTENTION! The safety notes of the operating instructions have to be regarded. Installation and wiring work may only be carried out by qualified electricians. The sheet „Quickstart“ is only a support.

Helmholtzstrasse 13  
77652 Offenburg  
Werner-von-Siemens-Strasse 12  
77656 Offenburg-Elgersweier

Phone +49 (0)781 / 206-0  
Fax +49 (0)781 / 2 53 18  
www.j-schneider.de  
info@j-schneider.de

